

Table (13): Results of Accuracy of Tadalafil.

| Concentration % | 50% | 100% | 150% |
|------------------------|------------|-------------|-------------|
| Average Area | 536000 | 1131115 | 1571804 |
| Assay % | 101.81 | 101.68 | 100.18 |
| RSD% | 0.57 | 1.51 | 0.27 |

The two tables are indicating a good recovery value; all data observed are within 98%-102% according to USP.

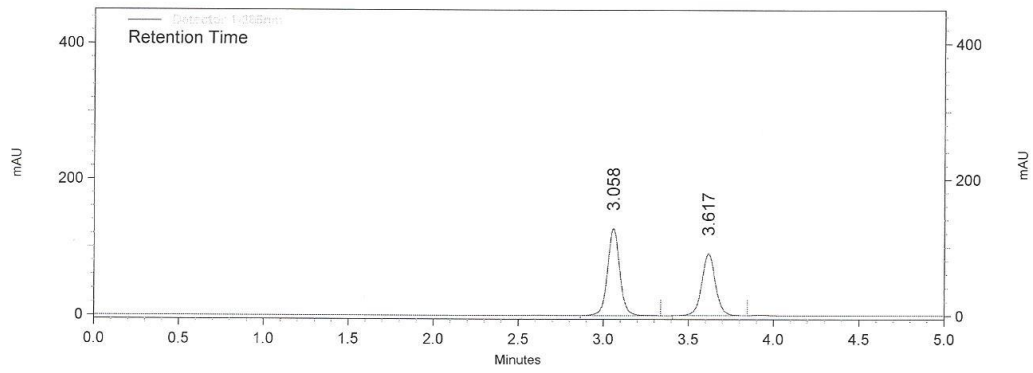


Figure 16 : Accuracy results level 50